

SYNC 6500 Meter Explorer:

DLMS Software with OPC Server for Reading, Parameterization and Testing DLMS Meters

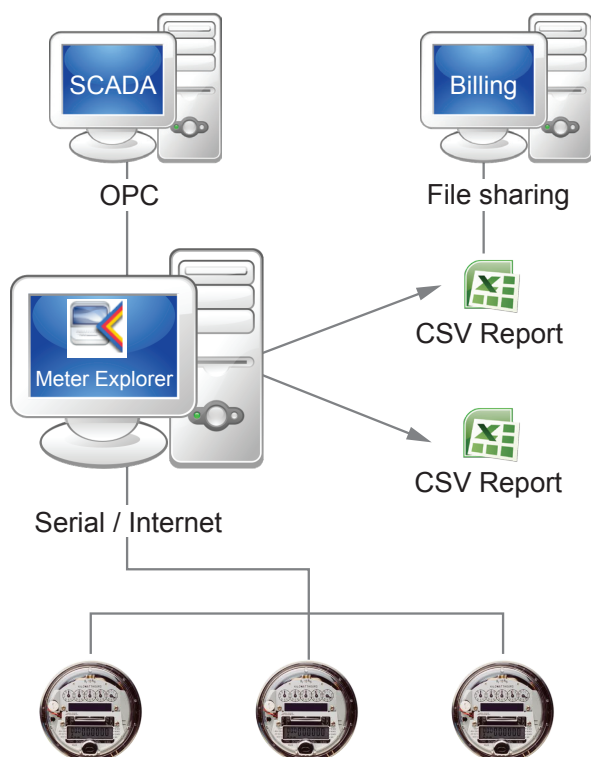
OVERVIEW

Meter Explorer (SYNC 6500) is a Windows DLMS Client application which enable user to communicate with DLMS (IEC 62056) meters.

APPLICATIONS

Utility meter reading / parameterization

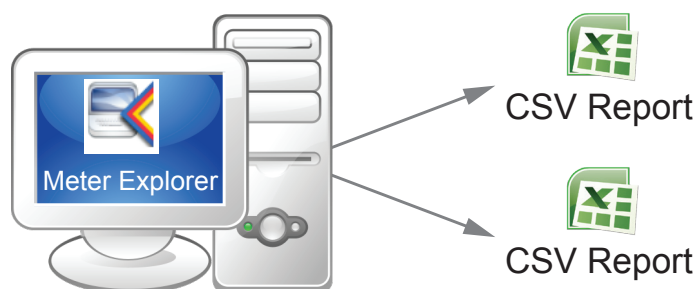
Meter Explorer allows multi-channel, multi-meter configuration, schedule automatic data read and generate hourly/daily reports in CSV/Txt format. Data collected by Meter Explorer can be accessed by SCADA or Billing Applications via OPC or File sharing. Meter Explorer also enable user to write programmable parameters such as meter time (RTC), passwords, device address, Calendar (ToD/ ToU) etc.



Test laboratory

With its user friendly GUI, meter explorer helps to validate DLMS meter for protocol conformance and functionality conformance. Test includes Profiling, selective access, authentication, events/tampers, load limit & Disconnect control, Time of Use, Firmware upgrade etc.

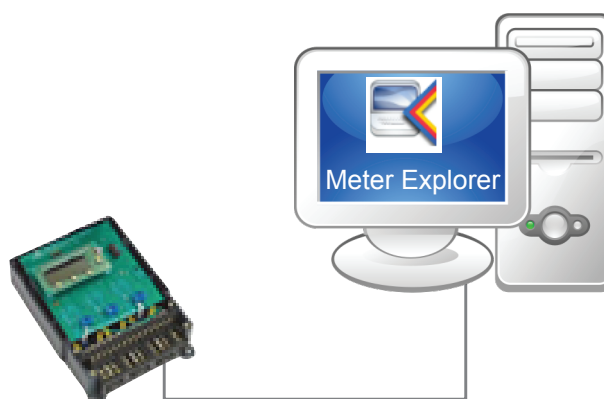
Password based login allows access control to the tool.



Meter Test Bench

Meter development/testing/demonstration

Meter explorer allows firmware developers / testers to easily issue various DLMS requests to standard/manufacture specific COSEM Objects of DLMS meter and check meter behavior by monitoring the response received. Detailed communication analysis can be performed using the traffic window of meter explorer.



KEY FEATURES

- Ideal for requirements of meter reading, providing out of the box connectivity to DLMS meters and devices.
- Universally accepted OPC Data Access V3.0 interface to meter data with backwards compatibility to earlier OPC DA versions.
- A handy tool for meter firmware developers or test engineers for development testing.
- Meter reading applications enables applications such as AMR, Parameterization software, SCADA to access DLMS meter data using the widely accepted OPC interface.
- Physical channels supported:
 - Direct HDLC(RS232/RS485/Optical)
 - IEC 62056-21 Mode E (RS232/Optical)
 - IEC 62056-47 (TCP/IP and UDP/IP)
 - Serial over IP(HDLC over IP network)
 - Ethernet and GPRS Modem
 - PSTN modem

- File logging support for communication packets and composite data, profile buffer (into CSV or TXT)
- Objectlist: Download from meter or manual creation
- Image transfer (Firmware upgrade)
- Read, Write, Get, Set, Action, Block transfer
- Selective access by Range and by Entry
- Push and Event notification

OBIS codes are automatically resolved to Object names and displayed for easy parameter identification. User can configure display settings to view time in DDMYYYY HH:MM:SS format or DLMS format (octet string (12) and to view register values in DLMS raw format or after applying scaler and unit

